



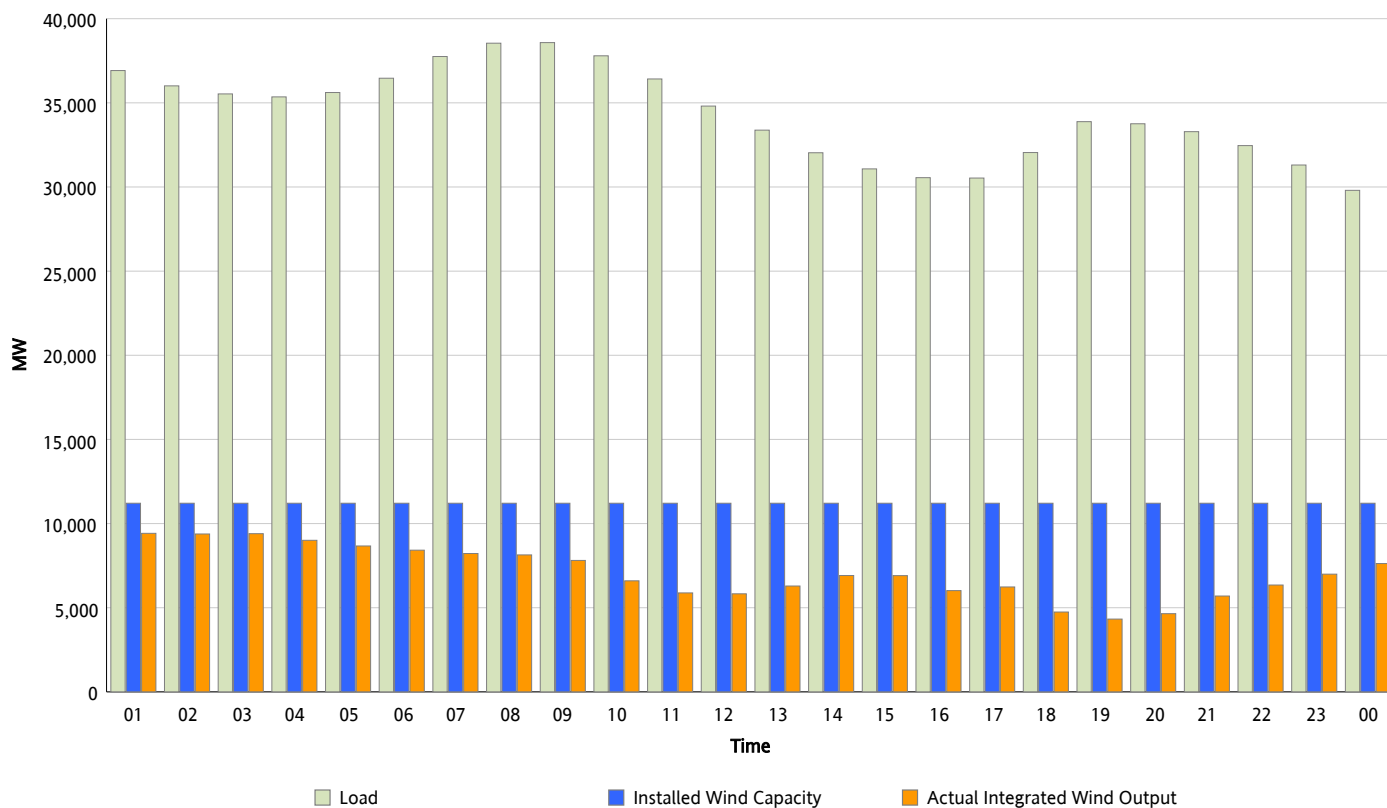
ERCOT Grid Operations

Wind Integration Report : 01/04/2014

Peak Load	38,580 MW
Load Peak Hour (HE)	09
Wind Over Peak	7,810 MW
Wind Record 05/02/13	9,674 MW
Max Wind Value*	9,494 MW
Wind Peak Time	02:12
Wind Integration %	26.64 %

Hourly Average Actual Load vs. Actual Wind Output

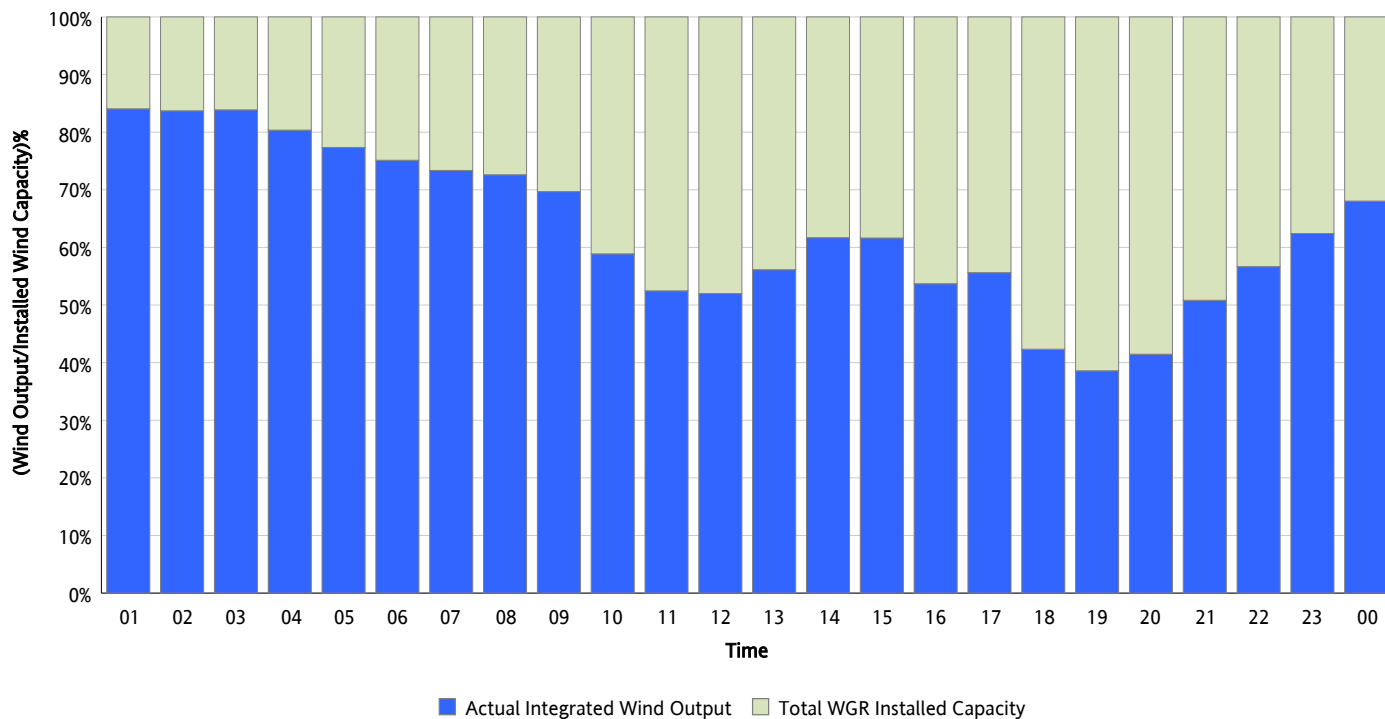
01/04/2014



** Wind Record and Wind Max represent instantaneous values and the rest of the values are integrated over the hour.
Capacity numbers used in the graphs are based on the expected commercial operation date of each Wind Generation Resource.*

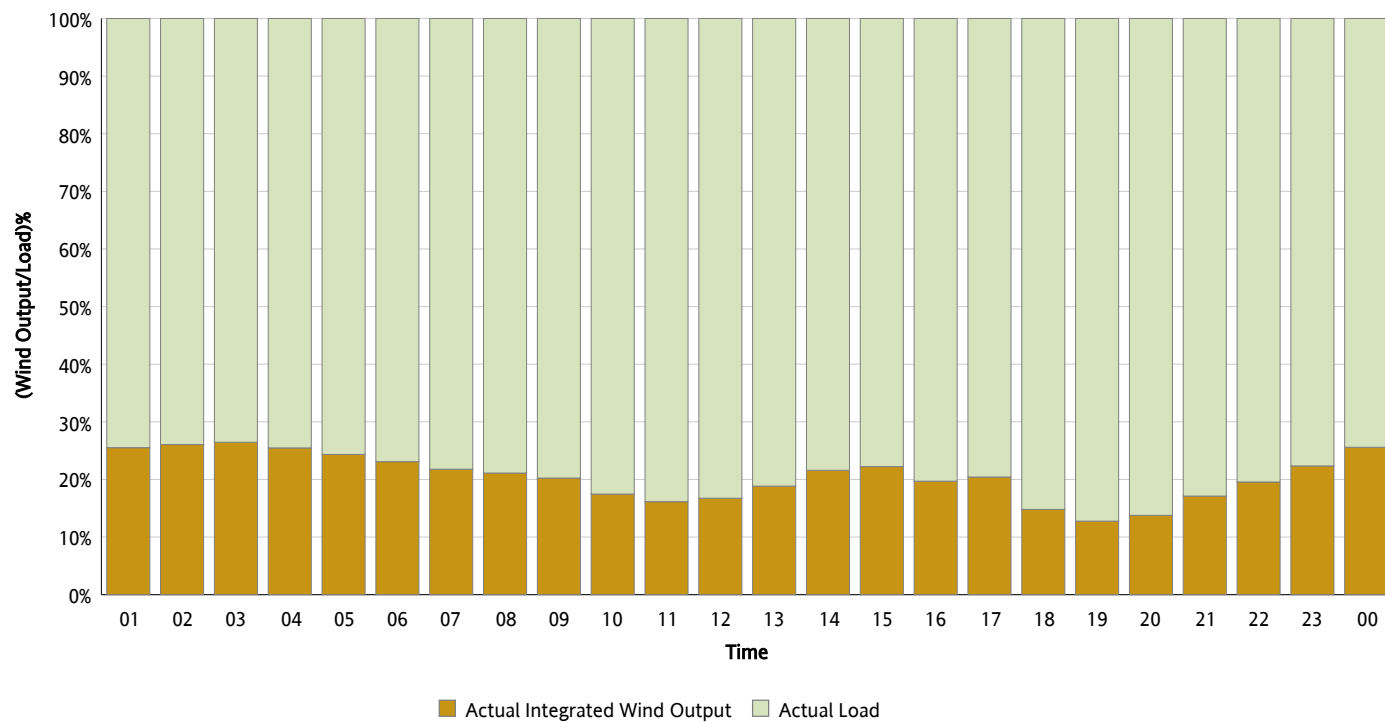
Actual Wind Output as a Percentage of the Total Installed Wind Capacity

01/04/2014



Actual Wind Output as a Percentage of the ERCOT Load

01/04/2014



ERCOT Load vs. Actual Wind Output

12/28/2013 - 01/04/2014

